

Lifetime Limited Warranty

PC Guardian Anti-Theft Products, Inc. ("PC Guardian"), warrants this lock against defects in material and workmanship for the lifetime of the lock. We will repair or replace any defective unit. Warranty does not cover cosmetic damages or damage from everyday wear and tear or from transportation by a common carrier.

Under no condition is PC Guardian liable for:

- Loss or damage to a computer.
- Loss of or damage to computer programs, records, or data.
- Consequential or incidental damages or expenses incurred, even if informed of their possibility.

REPAIR OR REPLACEMENT AS PROVIDED UNDER THIS WARRANTY IS THE EXCLUSIVE REMEDY OF THE CONSUMER. PC GUARDIAN SHALL NOT BE LIABLE FOR ANY INCIDENTAL OR CONSEQUENTIAL DAMAGES FOR BREACH OF ANY EXPRESS OR IMPLIED WARRANTY ON THIS PRODUCT, EXCEPT TO THE EXTENT PROHIBITED BY APPLICABLE LAW. ANY IMPLIED WARRANTY OF MERCHANTABILITY OR FITNESS FOR A PARTICULAR PURPOSE ON THIS PRODUCT IS LIMITED IN DURATION TO THE DURATION OF THIS WARRANTY.

Some states do not allow the exclusion of limitation of incidental or consequential damages, or allow limitation on how long an implied warranty lasts, so the above limitations or exclusions may not apply to you. This warranty gives you specific legal rights, and you may have other rights which vary from state to state.



Installation Instructions Model 7900 Drive Lock — 3.5" PC

To replace a lost key, PC Guardian must have the key's serial number.

Write your key's serial number in the space below and keep it in a secure place or register your serial number at:

<http://www.pcgardian.com>

1-800-288-8126 (US and Canada)
(415-459-0190)

<http://www.pcgardian.com>

PN-1545 8 April 04

Lifetime Limited Warranty

PC Guardian Anti-Theft Products, Inc. ("PC Guardian"), warrants this lock against defects in material and workmanship for the lifetime of the lock. We will repair or replace any defective unit. Warranty does not cover cosmetic damages or damage from everyday wear and tear or from transportation by a common carrier.

Under no condition is PC Guardian liable for:

- Loss or damage to a computer.
- Loss of or damage to computer programs, records, or data.
- Consequential or incidental damages or expenses incurred, even if informed of their possibility.

REPAIR OR REPLACEMENT AS PROVIDED UNDER THIS WARRANTY IS THE EXCLUSIVE REMEDY OF THE CONSUMER. PC GUARDIAN SHALL NOT BE LIABLE FOR ANY INCIDENTAL OR CONSEQUENTIAL DAMAGES FOR BREACH OF ANY EXPRESS OR IMPLIED WARRANTY ON THIS PRODUCT, EXCEPT TO THE EXTENT PROHIBITED BY APPLICABLE LAW. ANY IMPLIED WARRANTY OF MERCHANTABILITY OR FITNESS FOR A PARTICULAR PURPOSE ON THIS PRODUCT IS LIMITED IN DURATION TO THE DURATION OF THIS WARRANTY.

Some states do not allow the exclusion of limitation of incidental or consequential damages, or allow limitation on how long an implied warranty lasts, so the above limitations or exclusions may not apply to you. This warranty gives you specific legal rights, and you may have other rights which vary from state to state.



Installation Instructions Model 7900 Drive Lock — 3.5" PC

To replace a lost key, PC Guardian must have the key's serial number.

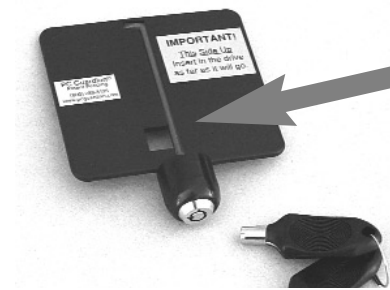
Write your key's serial number in the space below and keep it in a secure place or register your serial number at:

<http://www.pcgardian.com>

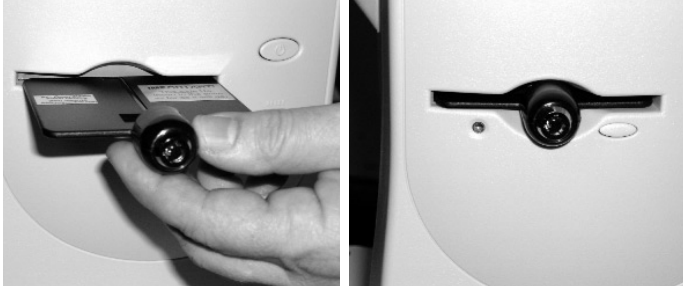
1-800-288-8126 (US and Canada)
(415-459-0190)

<http://www.pcgardian.com>

PN-1545 8 April 2004

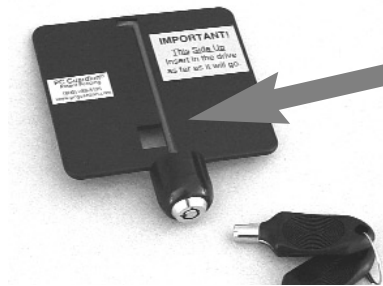


This model (model # 7900) has a long rod in the center.

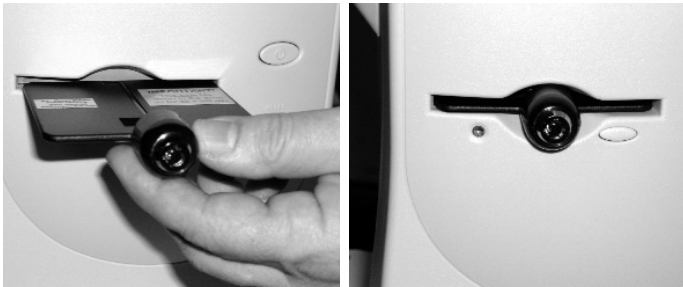


First, make sure the lock is in the unlocked position. Next, insert the plastic card into the disk drive as far as it will go.

Important: Make sure the **green label** that reads “This Side Up” is face up before inserting the card.

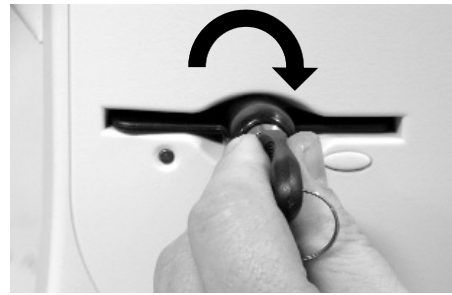


This model (model # 7900) has a long rod in the center.



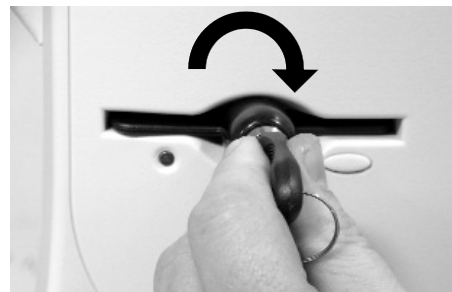
First, make sure the lock is in the unlocked position. Next, insert the plastic card into the disk drive as far as it will go.

Important: Make sure the **green label** that reads “This Side Up” is face up before inserting the card.



To lock, turn key right as far as it will go

Turn the key to the **right** to lock. When locked, the key is in the vertical position



To lock, turn key right as far as it will go

Turn the key to the **right** to lock. When locked, the key is in the vertical position